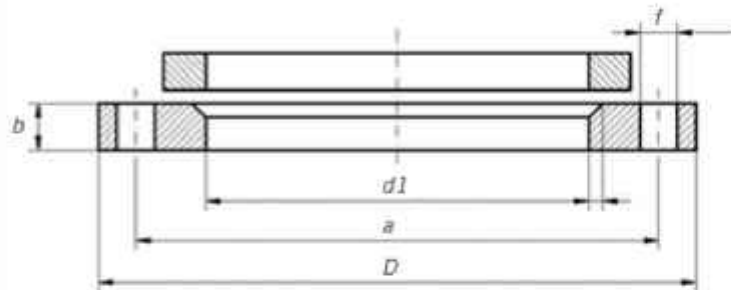


**Din 2642 / Din2642 / DIN 2642 PN10 FLANGE WELD NECK RF  
LOOSE FLANGE FOR FLANGE COLLAR PN 10 DIN 2642, DIN Connections**



Pipe		Flange					Screws			Weight of a flange (7,85 Kg/dm <sup>3</sup> )	
Rated Diameter	d1		D	d6	b	k	e	Number	Thread	d2	Kg
	ISO Series 1	DIN Series 2									
15	-	20	95	22	14	65	3	4	M 12	14	0,689
	21,3	-		24							
20	-	25	105	28	14	75	3	4	M 12	14	0,806
	26,9	-		30							
25	-	30	115	33	16	85	4	4	M 12	14	1,11
	33,7	-		36							
32	-	38	140	42	16	100	4	4	M 16	18	1,64
	42,4	-		46							
40	-	44,5	150	50	16	110	4	4	M 16	18	1,86
	48,3	-		54							
50	-	57	165	62	16	125	5	4	M 16	18	2,2
	60,3	-		65							
65	76,1	-	185	81	16	145	5	4	M 16	18	2,62
80	88,9	-	200	94	18	160	5	8	M 16	18	3,32
100	-	108	220	113	18	180	5	8	M 16	18	3,67
	114,3	-		119							
125	-	133	250	138	18	210	5	8	M 16	18	4,54
	139,7	-		145							
150	-	159	285	164	18	240	5	8	M 20	22	5,6
	168,3	-		173							

200	219.1	-	340	225	20	295	5	8	M 20	22	7.46
250	-	267	395	273	22	350	5	12	M 30	22	10.3
	273	-		279							
300	323.9	-	445	329	26	400	5	12	M 20	22	14
350	355.6	-	505	362	28	460	6	16	M 20	22	18.5
	-	368		374							
400	408.4	-	585	413	32	515	8	18	M 24	26	25
	-	419		426							
(450)	457	-	615	467	36	565	6	20	M 24	26	30.6
500	508	-	670	517	36	620	6	20	M 24	26	37
600	610	-	780	618	44	725	7	20	M 27	30	56.3
700	711	-	895	721	50	840	7	24	M 27	30	80.4
800	813	-	1015	824	56	950	7	24	M 30	33	113.2

There are many different flange standards to be found worldwide. To allow easy functionality and interchangeability, these are designed to have standardised dimensions. Common world standards include

- **ASA Flange / ANSI flanges / ASME flanges (USA),**
- **PN flanges / DIN flanges (European),**
- **BS10 flanges (British/Australian), and**
- **JIS flanges / KS flanges (Japanese/Korean)**

In most cases these are not interchangeable (e.g. an ANSI/ASME flange will not mate against a JIS flange). Further, many of the flanges in each standard are divided into "pressure classes", allowing flanges to be capable of taking different pressure ratings. Again these are not generally interchangeable (e.g. an ANSI/ASME 150 will not mate with an ANSI/ASME 300).

These pressure classes also have differing pressure and temperature ratings for different materials. Unique pressure classes for piping can also be developed for a process plant or power generating station; these may be specific to the corporation, engineering procurement and construction (EPC) contractor, or the process plant owner. The ANSI/ASME pressure classes for Flat-Face flanges are 125#, and 250#. The classes for Ring-Joint, Tongue & Groove, and Raised-Face flanges are 150#, 300#, 600#, 900#, 1500#, and 2500#.

The flange faces are also made to standardized dimensions and are typically "flat face", "raised face", "tongue and groove", or "ring joint" styles, although other obscure styles are possible.

Flange designs are available as "weld neck", "slip-on", "lap joint", "socket weld", "threaded", and also "blind".

#### Other countries

Flanges in other countries also are manufactured according to the standards for materials, pressure ratings, etc. Such standards include **DIN**, **BS**, and/or **ISO** standards.

#### Fields Name

**Din 2642, pn10 flange, pn 10 flange, pn10 flanges, pn 10 flanges, din2642, dīn 2642 flange, dīn 2642 flanges, din2642 flange, din2642 flanges, pn10 flange dimensions.**

## Our Other products in Copper Conductors & Copper Products

S.no	Table Of Content
1)	150 lb Flange
2)	300 lb Flange
3)	600 lb Flange
4)	900 lb Flange
5)	1500 lb Flange
6)	2500 lb Flange
7)	Weld Neck Flanges
8)	Din 2527 pn10 Blind Flanges
9)	Din 2576 pn10 Flanges
10)	Din2632 pn 10 Flanges
11)	Din2633 pn16 Flanges
12)	Din2634 pn25 Flanges
13)	Din2642 pn 10 flanges
14)	Din2635 pn 40 flanges